

**SAHU CITY**  
— Phase 2 —

Sahu City Phase 2 - RERA REGN. NO.  
**UPRERAPRJ391104/02/2024**  
Rera Website: [www.up-rera.in/projects](http://www.up-rera.in/projects)



# Pearl

2 & 3 BHK APARTMENTS

WHERE LUXURY MEETS ELEGANCE



ARTISTIC IMPRESSION



ARTISTIC IMPRESSION

# Pearl

2 & 3 BHK APARTMENTS

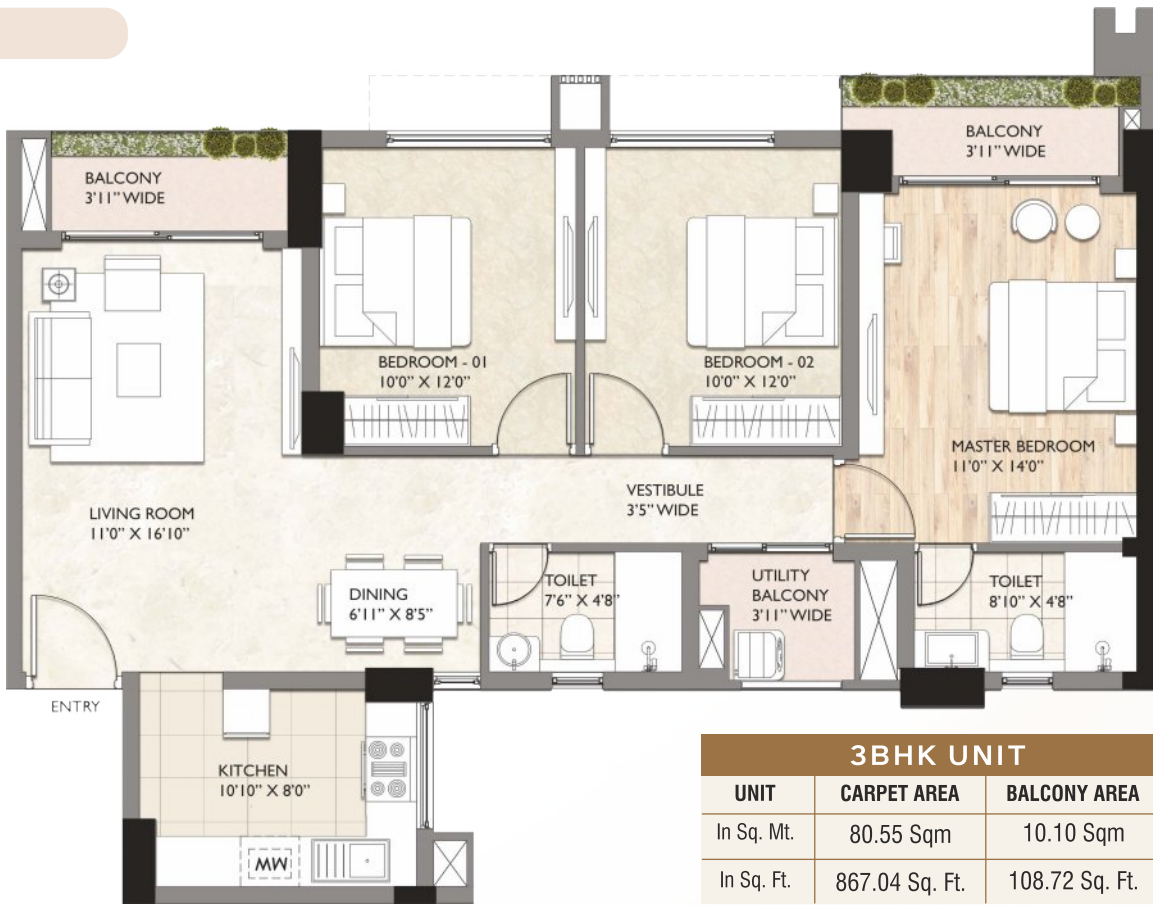
2 BHK



**2BHK UNIT**

UNIT	CARPET AREA	BALCONY AREA
In Sq. Mt.	61.35 Sqm	9.12 Sqm
In Sq. Ft.	660.37 Sq. Ft.	98.16 Sq. Ft.

### 3 BHK



3BHK UNIT		
UNIT	CARPET AREA	BALCONY AREA
In Sq. Mt.	80.55 Sqm	10.10 Sqm
In Sq. Ft.	867.04 Sq. Ft.	108.72 Sq. Ft.

### 3 BHK + Store



3BHK UNIT + STORE		
UNIT	CARPET AREA	BALCONY AREA
In Sq. Mt.	91.09 Sqm	9.83 Sqm
In Sq. Ft.	980.49 Sq. Ft.	105.81 Sq. Ft.

1 Sq. Mtr. is equal to 10.764 Sq. Ft.

## EXCLUSIVE AMENITIES



CLUB HOUSE



SWIMMING POOL



KIDS POOL



KIDS PLAY AREA



SKATING RINK



JOGGING TRACK



BADMINTON COURT



GYM



SENIOR CITIZEN AREA



HERB GARDEN



FLOWER ORCHARD



GAZEBO'S



THEME GARDEN



READER HUT

AND MANY MORE



ARTISTIC IMPRESSION

A MODERN DAY LIFESTYLE

SCAN ME

TO VIEW PROJECT LOCATION



### KEY DISTANCES

Kisan Path - 3 Mins | HCL IT City - 5 Mins | Shaheedpath - 7 Mins  
 Phoenix Palassio Mall - 7 Mins | International Cricket Stadium - 7 Mins  
 Medanta Hospital - 10 Mins | Gomti Nagar - 10 Mins | Lulu Mall - 10 Mins  
 Alambagh Bus & Metro Station - 20 Mins | Airport - 15 Mins  
 Hazratganj - 20 Mins



### Site Marketing Office Address

Sahu City, Main Sultanpur Road, NH-56, Opp. Alpha Public School Lucknow.

### Corporate Address

SAHU LAND DEVELOPERS PVT. LTD.  
 C-40/5, First Floor, Meera Bai Marg, Hazratganj, Lucknow, (U.P.)

Enquire Now:

**8052 500 800**

Web: [www.sldgroup.in](http://www.sldgroup.in)

Promoter RERA Registration No.: UPRERAPRM6199

Bank Account Details: CANARA BANK | A/c No.: 120025187153  
 Account Name: SLDP Collection A/c - Sahu City Phase-2 | IFSC Code: CNRB0000363

The area of the unit may vary to the extent of +/-2%, beyond that necessary adjustment in area rate amount as the case may be, shall be made. The configuration, layout, built-up area, sizes of various building elements are subject to change on the instance of statutory authorities which shall be binding on the buyers. The developers reserve the right to construct apartments, flats on the area are marked for future expansion/construction with the approval of statutory authorities and reserve the rights to connect all the services with the existing services without any additional obligation on the part of existing buyers either way. Fixtures, Furniture and Fittings shown in the plan are indicative only.